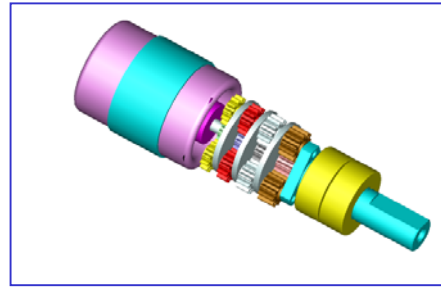
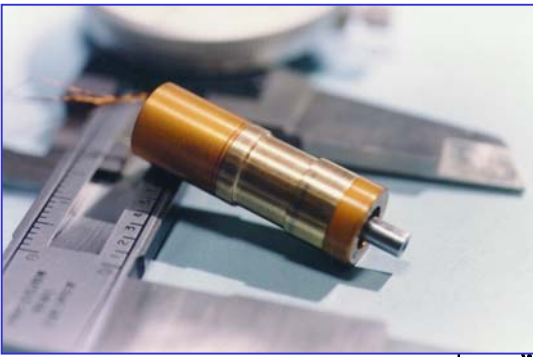


10 mm Motors/Gearheads

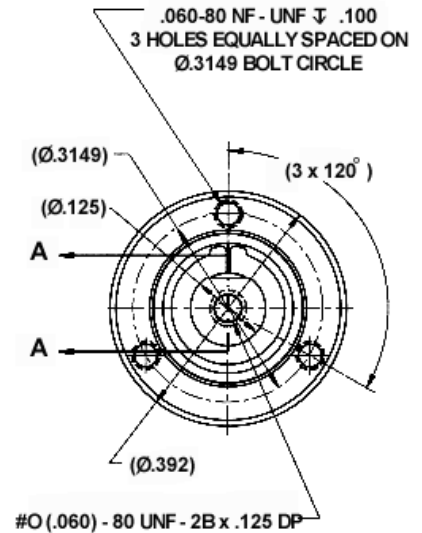
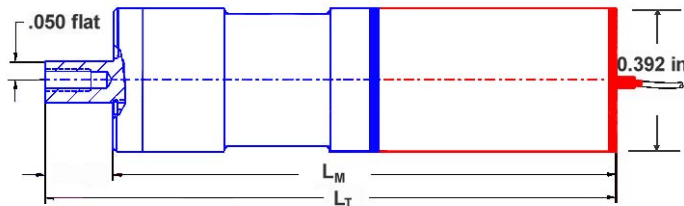


Motor Parameters	with 16:1 Gearhead		with 256:1 Gearhead	
	English	SI	English	SI
• Peak Torque (5 sec max)	2.8 in-oz	19.8 mNm	34 in-oz	240 mNm
• Continuous Torque	1.3 in-oz	9 mNm	18.5 in-oz	130 mNm
• Power @ Peak Torque	3 watts	3 watts	3 watts	3 watts
• Power @ Continuous Torque	0.5 watts	0.5 watts	0.5 watts	0.5 watts
• Temperature Rise	85°C/watt	85°C/watt	85°C/watt	85°C/watt
• Housing Length (L_M)	1.047 in	26.6 mm	1.381 in	35.07 mm
• Overall Length (L_T)	1.234 in	31.3 mm	1.568 in	39.82 mm
• Output Shaft Diameter	.125 in	3.175 mm	.125 in	3.175 mm
• Weight	0.33 oz	9.4 grams	0.35 oz	10 grams

Winding Constants	English	SI
Resistance	9 ohms	9 ohms
Volts @ Continuous	2.2 volts	2.2 volts
Current @ Continuous	0.24 amps	0.24 amps
K_t	0.52 in-oz/amp	3.7 mNm/amp
K_e	.38V/Krpm	0.0036v/rad/sec
Inductance	0.10mH	0.10mH
Number of Phases	3	3
Number of Poles	4	4

Note:

Motor designed to run at speeds of up to 21,000 RPM with current limit to insure peak power is not violated.



Features

- Available standard ratios are 16:1, 256:1, auxiliary gear boxes are available
- Super low weight - < 10 grams with gearhead (256:1)
- Zero-cogging design
- Available in standard temperature range (-60°C to +85°C). other ranges available (Cryo).
- Multiple Drive Options: Can be run as a 3-phase bipolar stepper, synchronously or as 3 phase brushless DC motor with Hall commutation onboard.
- Space Qualified - All materials meet NASA outgassing criteria
- Customized drive and control electronics are available

Motion Control Systems Division

350 Kennedy Drive
 Hauppauge, NY 11788
 Phone: (631) 231-9100
 E-Mail sales-motion@aeroflex.com

