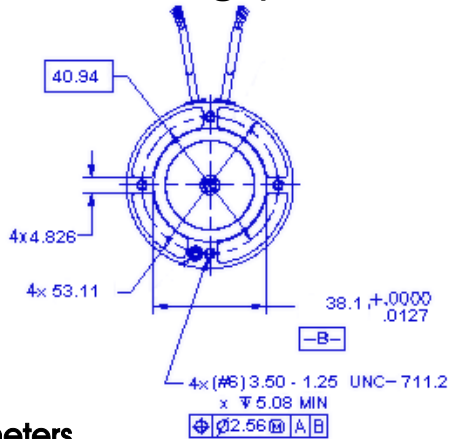
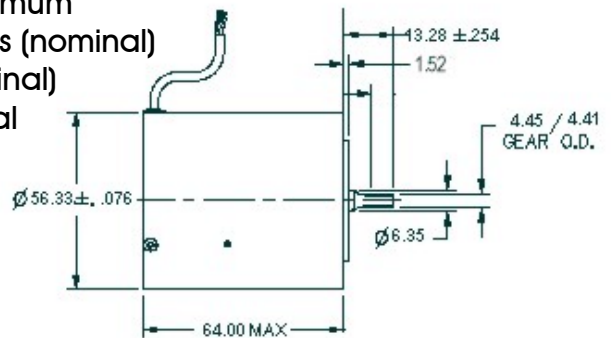


# 1.8 Degree Hybrid Stepper Motor (Redundant Windings)



## Motor Parameters (Bipolar Driven)

Km (Nm $\sqrt$ watts)	0.16
Running Torque (Nm)	.28 Nm @22.5 volts @8 pps (nominal)
Running Torque Constant	.706 Nm/amp minimum
Holding Torque (Nm)	.42 Nm @22.5 volts (nominal)
Holding Torque Constant	.56 Nm/amp (nominal)
Detent Torque (Nm)	.06-.08 Nm nominal
Phase Resistance (ohms)	62 ohms (nominal)
Phase Inductance	70 mH (nominal)
Power (watts)	8 watts nominal



## Motor/Gearhead Parameters

### 4:1 Gearhead

Running Torque	1 Nm nominal @ 22.5 volts @ 8 pps
Running Torque Constant	2.7 Nm/amp nominal
Mass with Gearhead	.95 kg

### 10:1 Gearhead

Running Torque	2.43 Nm nominal @22.5 volts @ 8 pps
Running Torque Constant	6.7 Nm/amp nominal
Mass with Gearhead	1 Kg

## Features

- Space Qualified
- Available with pinion for gearhead applications
- Ceramic or steel ball bearing options are available
- Dry or wet lubrication options are available
- All materials are compliant with NASA outgassing requirements
- Customized drive and control electronics are available

## Motion Control Systems Division

350 Kennedy Drive  
Hauppauge, NY 11788  
Phone: (631) 231-9100  
E-Mail sales-motion@aeroflex.com

